



# REV™ SERIES CARBON FIBER DRIVESHAFT ORDER FORM

## 1350 U-JOINTS 3.2" Dia. / JJC-AC0320

### STEP 1: VEHICLE DATA

Year, Make, Model: \_\_\_\_\_

Max Speed: \_\_\_\_\_

### Engine & transmission specifications

Max RPM: \_\_\_\_\_ HP & Torque: \_\_\_\_\_

Transmission Make & Model: \_\_\_\_\_

### Driveline information

High & Low Gear Ratio: \_\_\_\_\_

Rear Diff Type & Gear Ratio: \_\_\_\_\_

Rear Tire Size: \_\_\_\_\_ Min. Distance to Exhaust: \_\_\_\_\_

Current Driveshaft O.D.: \_\_\_\_\_

### STEP 3: SFI

Certified to the SFI 43.1 Standard:  Yes **+\$35**  No

### STEP 4: DRIVESHAFT MEASUREMENTS

Take measurements with vehicle at ride height. Measure to within 1/16". Available in lengths up to 65".

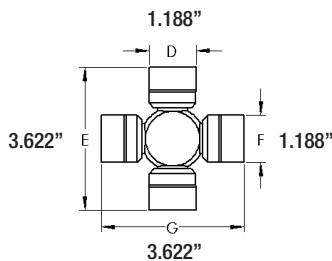
Center of front U-joint to center of rear U-joint or end of flange yoke (A<sup>2</sup> or E): \_\_\_\_\_

<sup>2</sup> Take this u-joint center-to-center measurement with the slip yoke in its operating position. The slip yoke operating position is typically determined by pulling the slip yoke out of the transmission 1" after it is fully bottomed out.

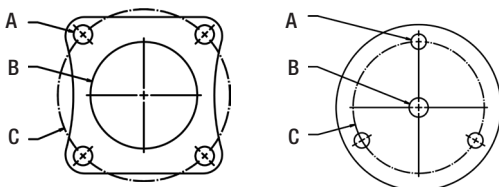
End of transmission tail housing to center of rear U-joint (B): \_\_\_\_\_

End of output shaft to end of transmission tail housing (C): \_\_\_\_\_

1350 U-Joint Dimensions



Flange Yoke Dimensions



### STEP 2: SLIP YOKE & REAR FLANGE

Slip yoke option:

#### Counter Bored

- GM 27 - 1.503" O.D., 6.9" Long
- GM 32 - 1.886" O.D., 7.9" Long
- GM 32 - 1.886" O.D., 5.5" Long
- GM 32 - 1.888" O.D., 5.5" Long, Hardened **+\$100**
- Mopar 30 - 1.680" O.D., 6.1" Long

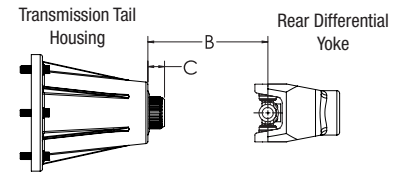
#### Full Spline

- GM 27 - 1.503" O.D., 5.5" Long
- GM 32 - 1.886" O.D., 5.5" Long
- GM 32 - 1.886" O.D., 6.9" Long
- GM 27 - 1.499" O.D., 5.5" Long, Hardened **+\$100**
- Ford 28 - 1.598" O.D., 6.6" Long (4R70W)
- Ford 28 - 1.499" O.D., 6.5" Long (C4, AOD, T5, T10)
- Ford 31 - 1.685" O.D., 6.4" Long

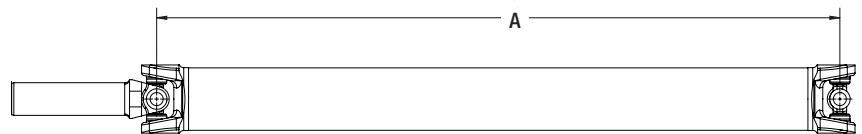
Rear flange yoke option:

- 4 Bolt, 2.0" Female Pilot, 4.25" Bolt Hole Circle **+\$100**
- 4 Bolt, 2.95" Female Pilot, 4.75" Bolt Hole Circle **+\$100**
- 3 Bolt, 16mm Female Pilot, 110mm Bolt Hole Circle **+\$200**
- None

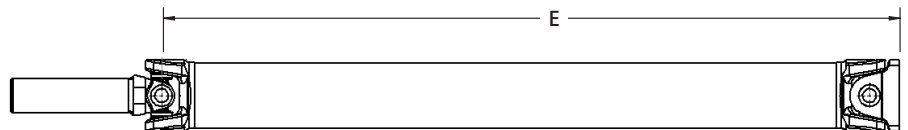
Detailed View  
Minus the Driveshaft



Driveshaft Assembly with Rear U-Joint



Driveshaft Assembly with Rear Flange Yoke





# REV™ SERIES CARBON FIBER DRIVESHAFT ORDER FORM

## PAYMENT & LEAD TIME

50% **non-refundable** deposit required on all custom driveshaft orders before production begins. The approximate lead time for a custom driveshaft is 2 weeks from receipt of completed order form, unless otherwise indicated in writing from QA1.

## LEGAL DISCLAIMER NOTICE

This composite driveshaft product and related components are sold as-is without any warranty whatsoever, expressed or implied, including but not limited to any implied warranties of merchantability or fitness for a particular purpose. QA1 assumes no responsibility or liability for the selection, installation or any use of the products. The end user acknowledges that the product will be used for vehicles with not more than 2000 HP with max torque of 1500 lb\*ft for driveshafts using 1350 Series U-joints and not more than 750 HP with max torque of 500 lb\*ft for driveshafts using all other U-joints and assumes any and all risks related to such activities. The end user and any person who installs this product and related components are solely responsible for determination of the suitability of the product and components selected. The end user installs and uses the products and components at their own risk and agrees to fully indemnify QA1 against any claims, damages or losses resulting from the selection, installation or use of the products or related components.

Only experienced and qualified persons should install the products and components. Failure to properly install the product or related components may result in vehicle damage, personal injury or death.

**QA1 IS NOT RESPONSIBLE FOR IMPROPER OR INCORRECT INFORMATION PROVIDED BY CUSTOMER.**

**ALL SALES FINAL.**

**Warning:** Be sure to inspect all components regularly, especially following a crash. Do not use any components which may have been damaged.

**Warning:** If composite driveshaft is dropped or damaged, it should be taken out of service and replaced.

## QUESTIONS?

For any questions, please contact QA1 at 800.721.7761 or 952.985.5675 to speak to a support specialist. Our office hours are Monday - Friday, 8 am - 5 pm CST.

## SUBMITTING THE ORDER FORM

Please submit this completed order form to an authorized QA1 dealer or directly to QA1 via email at sales@qa1.net or via fax at 952.985.5679.

**COMPLETED BY BUYER**

By signing below, I agree to the above disclaimer information and confirm that all information I have provided is accurate.

Signature: \_\_\_\_\_ Date: \_\_\_\_\_

Print Name: \_\_\_\_\_

Address: \_\_\_\_\_

City: \_\_\_\_\_ State: \_\_\_\_\_ Zip: \_\_\_\_\_

Email: \_\_\_\_\_ Phone: \_\_\_\_\_

**COMPLETED BY DEALER**

QA1 Dealer Name: \_\_\_\_\_

Address: \_\_\_\_\_

City: \_\_\_\_\_ State: \_\_\_\_\_ Zip: \_\_\_\_\_

Email: \_\_\_\_\_ Phone: \_\_\_\_\_

Submitted to QA1 by: \_\_\_\_\_ Date: \_\_\_\_\_