



DON'T FORGET

These instructions can be found in color and expandable at QA1.net

Technical Support Line: (952) 985-5675 Email: sales@QA1.net

INSTALLATION INSTRUCTIONS

QA1 P/N RCK52360, RCK52361 thru RCK52365, RCK52460 thru RCK52462, RK110K
QA1 1971-1976 GM B-Body Rear Coil-Over Conversion Kit

TOOLS AND SUPPLIES REQUIRED

- Floor Jack
- Jack Stands
- Tire Chocks
- Square
- Drill and Drill Bits
- Common Hand Tools
- Torque Wrench
- Anti-Seize

Coil-Over Shock Assembly:

1. Screw the aluminum locking collar (shoulder up) and the spring seat adjuster nut (shoulder up) down to the last thread - NO FURTHER. **(Figure 1)** Now is a good time to lubricate the threads of the shock body with **Permatex® Anti-Seize Lubricant**.
2. QA1 highly recommends using the QA1 thrust bearing kit (part #7888-109) for ease of adjustment. If the thrust bearing kit is used, coat both washers with **Permatex® Anti-Seize Lubricant**. Install the stainless steel spring seat washer, then the bearing, then the second washer, making a “thrust bearing sandwich”. **(Figure 2)** If the thrust bearing kit is not used, coat one side of the stainless-steel spring seat washer that came with the shock with **Permatex® Anti-Seize Lubricant**.
3. Place the lubricated side of the washer down on the spring seat. Slide the spring over the shock body and down onto the spring seat. Slip the spring cap in place, making sure that it is set in the spring squarely.
4. Adjust the spring seat up until the spring is slightly compressed. This ensures that the spring cap, spring and spring seat washer remain in place and aligned.

Removal:

- 1) With the vehicle sitting on level ground, measure the vehicle ride height from the ground to the center of the wheel wells and record these measurements.
- 2) Jack the car up and ensure that the frame is set securely on jack stands. See the owner’s manual for proper jacking techniques.
- 3) Use a jack under the rear axle to remove tension from the rear shocks and remove them from the vehicle. The lower shock mounting bolts also need to be removed from the axle.
- 4) Remove the rear springs.

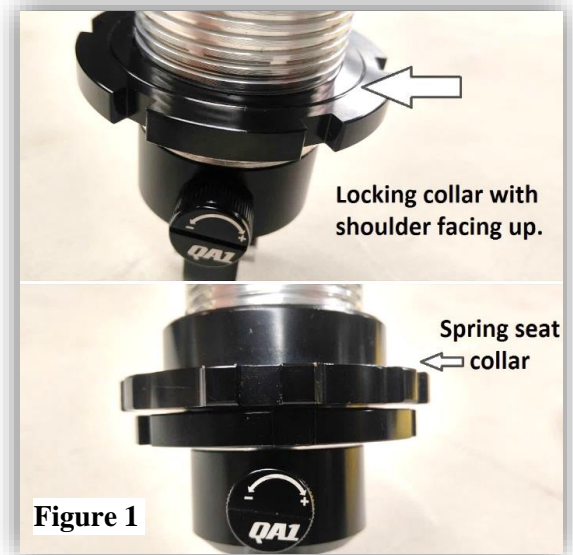


Figure 1

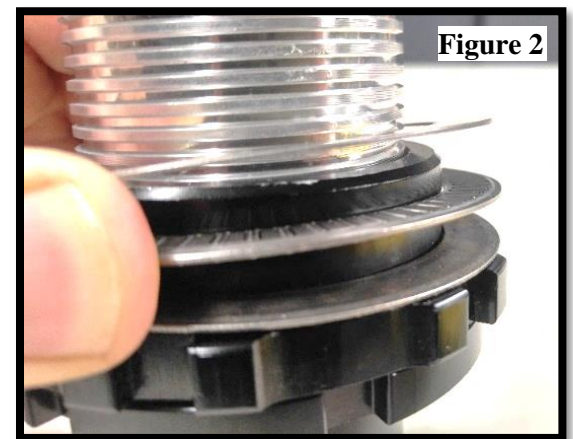
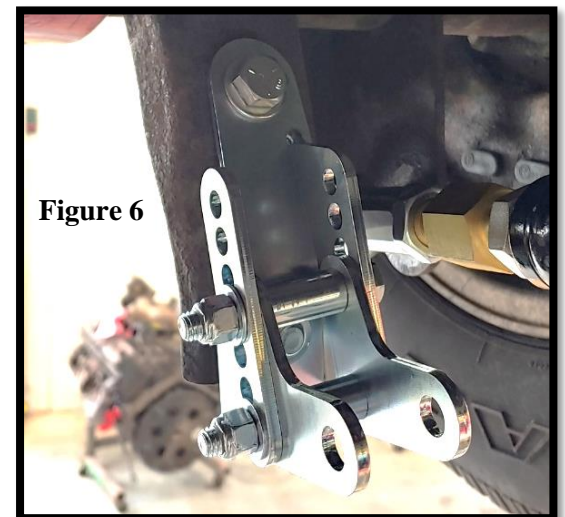
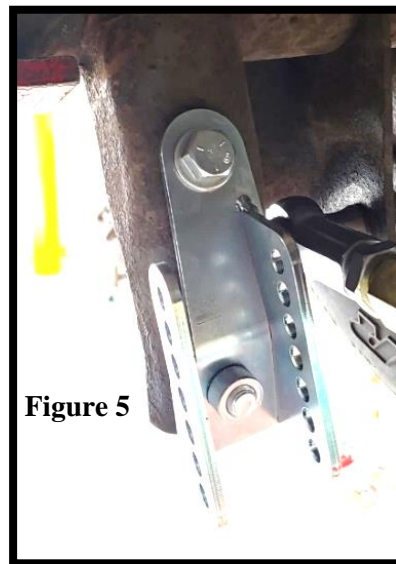
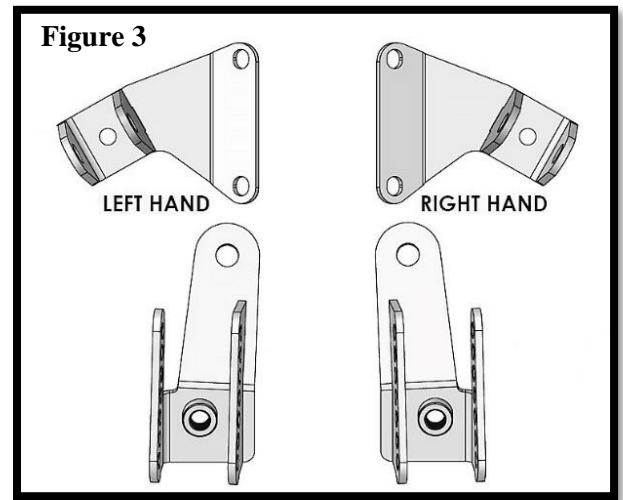


Figure 2

INSTALLATION-

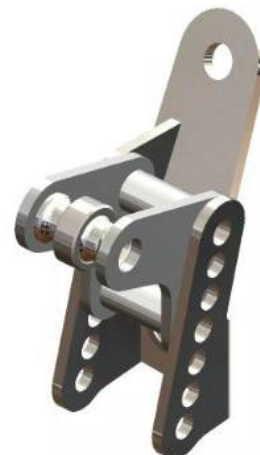
1. Identify the right (passenger side) and left (driver side) upper and lower coil-over brackets. **(Figure 3)**
2. Mount the lower bracket to the factory shock mounting hole using one 1/2" x 1" bolt in the lower connection from the back side of the car. **(Figure 4)**
3. Center the upper hole on the axle mount and drill the upper hole to 1/2". The mount does not need to be vertical on the axle. **(Figure 5)**
4. Secure the upper hole of the lower mount to the axle using 1/2" x 1-1/4" bolt with one 1/2" washer and nyloc nut. Torque both connections to 50 lb. ft. **(Figure 6)**



NOTE:

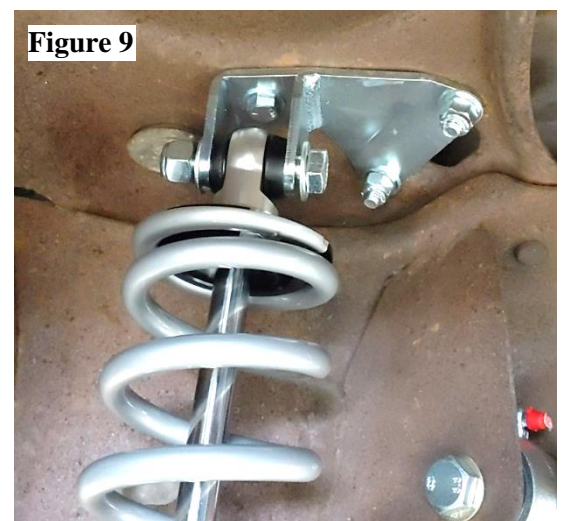
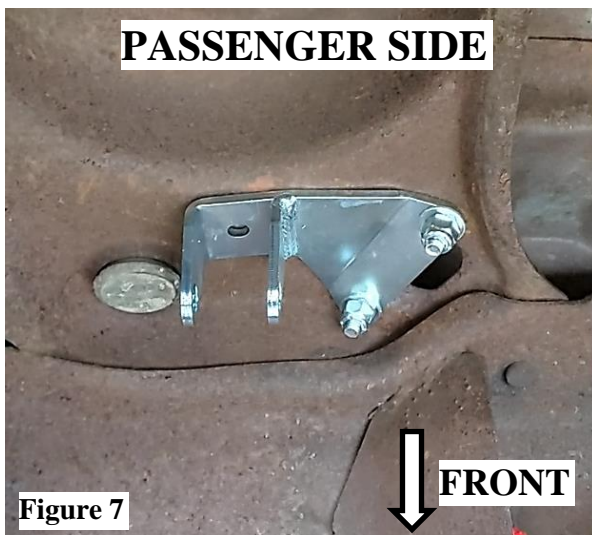
The lower bracket has multiple mounting heights for the lower shock mount. This allows for a ride height range of +2" higher than stock down to -3" below stock. For +2" higher the "L" brackets will be mounted at the top hole and for -3" lower than stock the "L" brackets would be mounted in the lowest hole of the axle bracket.

LOWEST POSITION



HIGHEST POSITION

5. Install the "L" brackets **inside of the drilled tabs** of the lower shock mount with one 1-1/4" long sleeve inside of the axle bracket. Secure using 3/8" x 2-3/4" bolts with two washers per connection and one nyloc nut. Torque to 31 lb. ft. **(Figure 6)**
6. Secure the upper shock mount to the two existing shock holes using 3/8" x 1" hardware with two washers and one nylock nut per connection. Torque to 31 lb. ft. **(Figure 7)**
7. Drill the hole between the shock mounting tabs to 3/8" and secure with 3/8" x 1" hardware with the bolt head on the bracket side, with two washers and one nyloc nut. Torque to 31 lb. ft. **(Figure 8)**
8. Refer to the coil-over assembly instructions included with the shocks to install the spring onto the shock.
9. Install the shock to the upper and lower mounts with the adjustment knobs towards the front of the vehicle. Use the included 1/2" x 2.5" hardware with two washers and one nyloc nut per connection to secure. **(Figure 9)** You may need to raise the axle to line up the mounting holes. Torque to 50 lb. ft.
10. Adjust the spring seat to your desired ride height. When measuring ride height it is recommended to roll the car back and forth or #GoDrivelt before measuring. This will allow the suspension to settle and show a more accurate ride height.



NOTE:

Depending on the desired ride height, a combination of ride height adjustment at the shock and the lower bracket should be used. **The recommended length of this shock at ride height is 15"-17.5"**, measured center/center on the mounting bolts with the suspension loaded.



Technical Support Line: (952) 985-5675

Email: sales@QA1.net

READ ALL INSTRUCTIONS CAREFULLY AND THOROUGHLY PRIOR TO STARTING INSTALLATION. PRODUCTS THAT HAVE BEEN INSTALLED ARE NOT ELIGIBLE FOR RETURN. USE THE PROPER JACKING LOCATIONS. DEATH OR SERIOUS INJURY CAN RESULT IF INSTRUCTIONS ARE NOT CORRECTLY FOLLOWED. A GOOD CHASSIS MANUAL, AVAILABLE AT YOUR LOCAL PARTS STORE, MAY ALSO AID IN YOUR INSTALLATION.

• DISCLAIMER / WARRANTY •

QA1 WARRANTS THAT THE PRODUCTS WILL BE FREE FROM DEFECTS IN MATERIAL AND WORKMANSHIP FOR ONE YEAR FROM DATE OF SALE TO THE ORIGINAL PURCHASER. QA1 MAKES NO OTHER WARRANTY OF ANY KIND, EXPRESS OR IMPLIED. QA1 SHALL HAVE NO OBLIGATION UNDER THE FOREGOING WARRANTY WHERE THE DEFECT IS THE RESULT OF IMPROPER OR ABNORMAL USE, YOUR NEGLIGENCE, VEHICLE ACCIDENT, IMPROPER OR INCORRECT INSTALLATION OR MAINTENANCE, NOR WHEN THE PRODUCT HAS BEEN REPAIRED OR ALTERED IN ANY WAY. QA1'S LIABILITY IN THE CASE OF DEFECTIVE PRODUCTS SUBJECT TO THE FOREGOING WARRANTY SHALL BE LIMITED TO THE REPAIR OR REPLACEMENT, AT QA1'S OPTION, OF THE DEFECTIVE PRODUCTS.

THE USER UNDERSTANDS AND RECOGNIZES THAT RACING PARTS, SPECIALIZED STREET ROD EQUIPMENT, AND ALL PARTS AND SERVICES SOLD BY QA1 ARE EXPOSED TO MANY AND VARIED CONDITIONS DUE TO THE MANNER IN WHICH THEY ARE INSTALLED AND USED. QA1 SHALL BEAR NO LIABILITY FOR ANY LOSS, DAMAGE OR INJURY, EITHER TO A PERSON OR TO PROPERTY, RESULTING FROM THE INSTALLATION, DIRECT OR INDIRECT USE OF ANY QA1 PRODUCTS OR INABILITY BY THE BUYER TO DETERMINE PROPER USE OR APPLICATION OF QA1 PRODUCTS. WITH THE EXCEPTION OF THE LIMITED LIABILITY WARRANTY SET FORTH ABOVE, QA1 SHALL NOT BE LIABLE FOR ANY CLAIMS, DEMANDS, INJURIES, DAMAGES, ACTIONS, OR CAUSES OF ACTION WHATSOEVER TO BUYER ARISING OUT OF OR CONNECTED WITH THE USE OF ANY QA1 PRODUCTS. MOTORSPORTS ARE DANGEROUS; AS SUCH, NO WARRANTY OR REPRESENTATION IS MADE AS TO THE PRODUCT'S ABILITY TO PROTECT THE USER FROM INJURY OR DEATH. THE USER ASSUMES THAT RISK!

Dedicated Technical Support Team

QA1 is dedicated to providing quality support and instructions. We employ passionate racers and car enthusiasts that know our products and the industry to better serve you.

Give our tech support line a call at **1.800.721.7761**

Visit online at www.QA1.net/tech or www.YouTube.com/QA1Tech for:

- Frequently Asked Questions
- Quick Tips
- Install Information
- Tuning and Repair Guides
- Other Technical Information

Our technical support and order lines are open **Monday – Friday, 8 am to 5 pm CST.**

