



These instructions can be found in color and expandable at QA1.net

Technical Support Line: (952) 985-5675 sales@QA1.net

**INSTALLATION INSTRUCTIONS**

QA1 P/N 52894 Rear Sway Bar  
1973-1977 GM A-Body, '77-'96 GM B-body

**TOOLS AND SUPPLIES REQUIRED**

- Floor jack and jack stands
- Wrenches
- Blue Loctite™
- Ratchet and Sockets

**Pre-Installation Note:**

Vehicles not originally equipped with a rear sway bar will require OEM trailing arms originally equipped with factory sway bar or boxed trailing arms such as QA1 #5208 ('73-'77 A-body), #5203 (78-93 B-body), or #5209 ('94-'96 B-body).

The 7/16" x 5.5" long hardware included with this sway bar is only for installation to OEM lower trailing arms and will be too long if using QA1 or aftermarket boxed trailing arms. →

When using this sway bar with QA1 (or other aftermarket) lower trailing arms, use the 7/16" x 4" hardware included with the QA1 lower trailing arms. Other brands of lower trailing arms will need customer supplied 7/16" x 4" hardware as the 5.5" long hardware will be too long.

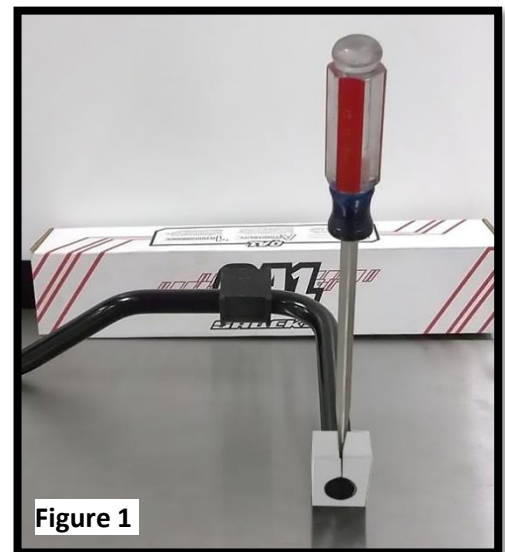


**Installation Instructions**

1. Raise and support the vehicle with jack stands on a stable surface. *Note: Never rely on a jack alone to support a vehicle.*

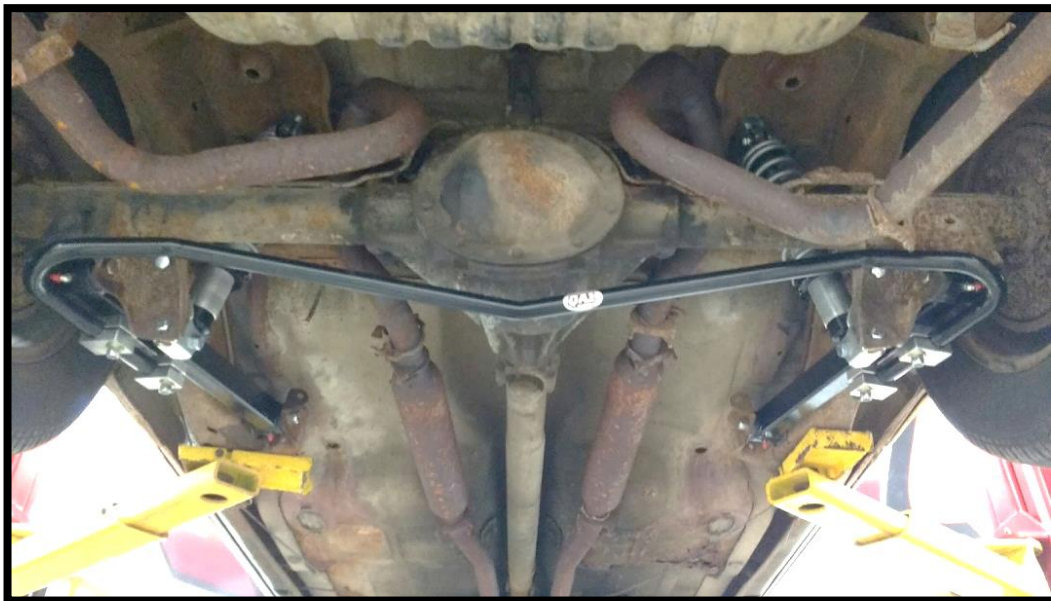
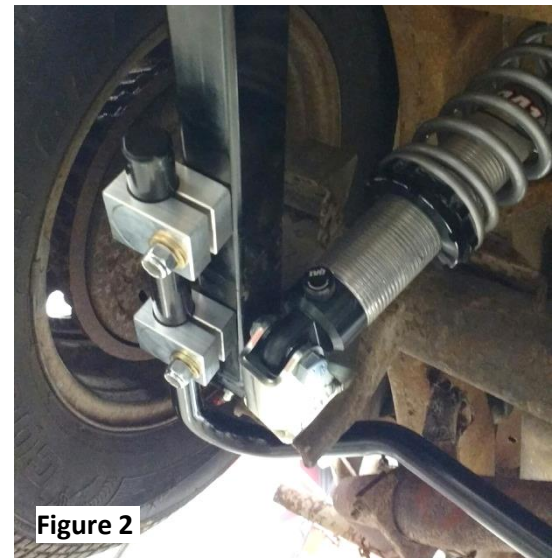
*CAUTION: Sway bars are heavy steel parts that can cause injury if unsupported during removal or installation.*

2. Use a small pry bar to spread the sway bar mounting blocks; install the mounting blocks onto the QA1 sway bar (two per side). See **Figure 1**.
3. Use the supplied hardware to install in the following order:
  - a. Place one thick washer onto the bolt, and then slide the bolt up through the mounting block. (**Figure 2**)



- b. Install the QA1 sway bar and bolts through the trailing arms, followed by the thick washers, then the locking nuts.
4. Adjust the sway bar so that it contacts both trailing arms evenly and squarely in the vehicle. The best way to ensure that the sway bar is mounted squarely is by measuring from the first bend in the sway bar to the rear surface of the mounting block, verifying that the measurements are the same for both sides. Torque the mounting hardware to 50 lb. ft. at this time.
  5. Check for any contact with brake lines, electrical wiring, fuel lines or cables. Adjust the sway bar as needed.

*Note: It is best to use sway bars that have been designed to work together. Never drive a vehicle with only a rear sway bar installed, as this can cause a dangerous over steer condition.*



READ ALL INSTRUCTIONS CAREFULLY AND THOROUGHLY PRIOR TO STARTING INSTALLATION. PRODUCTS THAT HAVE BEEN INSTALLED ARE NOT ELIGIBLE FOR RETURN. USE THE PROPER JACKING LOCATIONS. DEATH OR SERIOUS INJURY CAN RESULT IF INSTRUCTIONS ARE NOT CORRECTLY FOLLOWED. A GOOD CHASSIS MANUAL, AVAILABLE AT YOUR LOCAL PARTS STORE, MAY ALSO AID IN YOUR INSTALLATION.

• **DISCLAIMER / WARRANTY** •

QA1 WARRANTS THAT THE PRODUCTS WILL BE FREE FROM DEFECTS IN MATERIAL AND WORKMANSHIP FOR ONE YEAR FROM DATE OF SALE TO THE ORIGINAL PURCHASER. QA1 MAKES NO OTHER WARRANTY OF ANY KIND, EXPRESS OR IMPLIED. QA1 SHALL HAVE NO OBLIGATION UNDER THE FOREGOING WARRANTY WHERE THE DEFECT IS THE RESULT OF IMPROPER OR ABNORMAL USE, YOUR NEGLIGENCE, VEHICLE ACCIDENT, IMPROPER OR INCORRECT INSTALLATION OR MAINTENANCE, NOR WHEN THE PRODUCT HAS BEEN REPAIRED OR ALTERED IN ANY WAY. QA1'S LIABILITY IN THE CASE OF DEFECTIVE PRODUCTS SUBJECT TO THE FOREGOING WARRANTY SHALL BE LIMITED TO THE REPAIR OR REPLACEMENT, AT QA1'S OPTION, OF THE DEFECTIVE PRODUCTS.

THE USER UNDERSTANDS AND RECOGNIZES THAT RACING PARTS, SPECIALIZED STREET ROD EQUIPMENT, AND ALL PARTS AND SERVICES SOLD BY QA1 ARE EXPOSED TO MANY AND VARIED CONDITIONS DUE TO THE MANNER IN WHICH THEY ARE INSTALLED AND USED. QA1 SHALL BEAR NO LIABILITY FOR ANY LOSS, DAMAGE OR INJURY, EITHER TO A PERSON OR TO PROPERTY, RESULTING FROM THE INSTALLATION, DIRECT OR INDIRECT USE OF ANY QA1 PRODUCTS OR INABILITY BY THE BUYER TO DETERMINE PROPER USE OR APPLICATION OF QA1 PRODUCTS. WITH THE EXCEPTION OF THE LIMITED LIABILITY WARRANTY SET FORTH ABOVE, QA1 SHALL NOT BE LIABLE FOR ANY CLAIMS, DEMANDS, INJURIES, DAMAGES, ACTIONS, OR CAUSES OF ACTION WHATSOEVER TO BUYER ARISING OUT OF OR CONNECTED WITH THE USE OF ANY QA1 PRODUCTS. MOTORSPORTS ARE DANGEROUS; AS SUCH, NO WARRANTY OR REPRESENTATION IS MADE AS TO THE PRODUCT'S ABILITY TO PROTECT THE USER FROM INJURY OR DEATH. THE USER ASSUMES THAT RISK!