

WPB-T & WPB-TG

Wide Series - Stainless Steel - PTFE Lined

P R E C I S I O N

WPB-T & WPB-TG Features

BALL

- 440C Stainless Steel
- Heat Treated

- Hard Chrome Plated
- Precision Ground

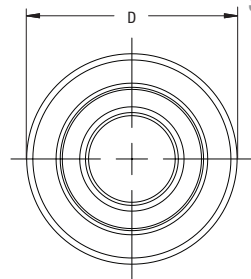
RACE

- Stainless Steel
- Heat Treated
- PTFE Lined
- Staking Groove Optional (WPB-TG)

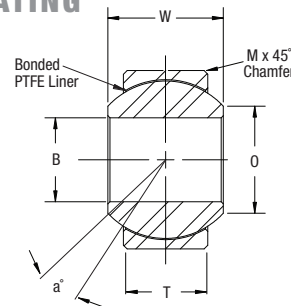
DIMENSIONS IN INCHES

WPB-T

Part Number	B + .0000 - .0005	D + .0000 - .0005	T ± .005	W + .000 - .002	O Flat Dia. Ref.	M Cham. Ref.	Ball Dia. Ref.	Misalign. Angle a°	Ult. Radial Static Load Lbs.	Ult. Axial Static Load Lbs.	No Load Breakaway Torque In. Lbs.	Approx. Brg. Wgt. Lbs.
WPB4T	0.2500	0.6250	0.327	0.437	0.300	0.022	0.531	15	5,500	1,770	0.25-5	0.03
WPB5T	0.3125	0.6875	0.317	0.437	0.360	0.032	0.593	14	9,400	1,640	1-8	0.04
WPB6T	0.3750	0.8125	0.406	0.500	0.466	0.032	0.687	8	13,700	2,630	1-8	0.06
WPB7T	0.4375	0.9375	0.442	0.562	0.537	0.032	0.781	10	20,700	3,650	3-12	0.08
WPB8T	0.5000	1.0000	0.505	0.625	0.607	0.032	0.875	9	21,400	4,970	3-12	0.10
WPB9T	0.5625	1.1250	0.536	0.687	0.721	0.032	1.000	10	26,600	5,370	3-12	0.14
WPB10T	0.6250	1.1875	0.567	0.750	0.752	0.032	1.062	12	29,000	6,130	3-12	0.16
WPB12T	0.7500	1.3750	0.630	0.875	0.845	0.044	1.250	13	37,000	7,730	3-12	0.24
WPB14T	0.8750	1.6250	0.755	0.875	0.995	0.044	1.375	6	65,200	10,800	3-12	0.35
WPB16T	1.0000	2.1250	1.005	1.375	1.269	0.044	1.875	12	104,000	19,300	3-12	0.97



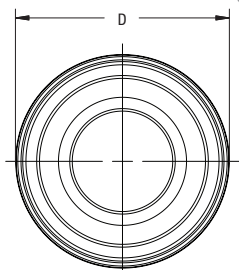
SELF-LUBRICATING



DIMENSIONS IN INCHES

WPB-TG Staking Groove

Part Number	B + .0000 - .0005	D + .0000 - .0005	T ± .005	W + .000 - .002	O Flat Dia. Ref.	P + .000 - .015	R + .002 - .005	S Min.	G + .000 - .010	Ball Dia. Ref.	Misalign. Angle a°	Ult. Radial Static Load Lbs.	Ult. Axial Static Load Lbs.	No Load Breakaway Torque In. Lbs.	Approx. Brg. Wgt. Lbs.
WPB4TG	0.2500	0.6250	0.327	0.437	0.300	0.030	0.010	0.010	0.565	0.531	15	5,500	1,770	0.25-5	0.03
WPB5TG	0.3125	0.6875	0.317	0.437	0.360	0.030	0.010	0.010	0.627	0.593	14	9,400	1,640	1-8	0.04
WPB6TG	0.3750	0.8125	0.406	0.500	0.466	0.040	0.015	0.020	0.714	0.687	8	13,700	2,630	1-8	0.06
WPB7TG	0.4375	0.9375	0.442	0.562	0.537	0.040	0.015	0.020	0.839	0.781	10	20,700	3,650	3-12	0.08
WPB8TG	0.5000	1.0000	0.505	0.625	0.607	0.040	0.015	0.020	0.902	0.875	9	21,400	4,970	3-12	0.10
WPB9TG	0.5625	1.1250	0.536	0.687	0.721	0.040	0.015	0.020	1.027	1.000	10	26,600	5,370	3-12	0.14
WPB10TG	0.6250	1.1875	0.567	0.750	0.752	0.040	0.015	0.020	1.089	1.062	12	29,000	6,130	3-12	0.16
WPB12TG	0.7500	1.3750	0.630	0.875	0.845	0.060	0.015	0.020	1.253	1.250	13	37,000	7,730	3-12	0.24
WPB14TG	0.8750	1.6250	0.755	0.875	0.995	0.060	0.015	0.020	1.503	1.375	6	65,200	10,800	3-12	0.35
WPB16TG	1.0000	2.1250	1.005	1.375	1.269	0.060	0.015	0.020	2.003	1.875	12	104,000	19,300	3-12	0.97



SELF-LUBRICATING

