

# GEZ & GEZ-2RS

Fractured Race - Sealed (2RS)  
C O M M E R C I A L

Inch  
Spherical  
Bearings



## GEZ & GEZ-2RS Features

### BALL

- 52100 Bearing Steel
- Protective Coated for Corrosion Resistance

### RACE

- 52100 Bearing Steel
- Protective Coated for Corrosion Resistance
- 2 Rubber Seals (2RS)

## GEZ & GEZ-2RS Tolerances

In the GEZ series, tolerances differ based on the size of the spherical bearing. Use this table to determine the tolerances for each specific spherical bearing.

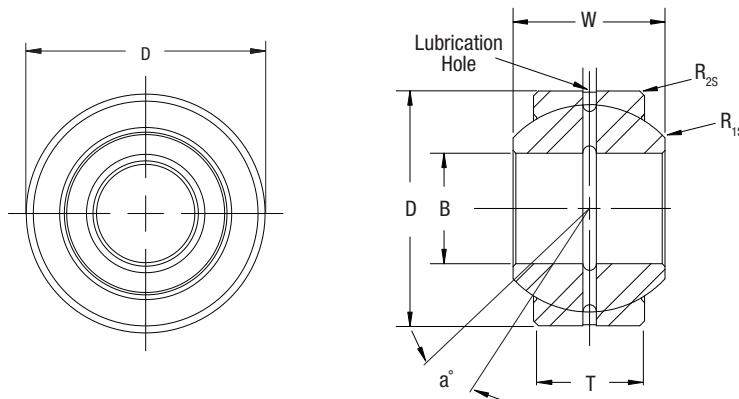
Sizes	B	D	W	T
12-15	+ .0000 - .0003	+ .0000 - .0003	+ .000 - .005	+ .000 - .009
19-25	+ .0000 - .0004	+ .0000 - .00035	+ .000 - .005	+ .000 - .009
31-44	+ .0000 - .0005	+ .0000 - .0004	+ .000 - .005	+ .000 - .009
50-76	+ .0000 - .0006	+ .0000 - .0005	+ .000 - .006	+ .000 - .012

PART NUMBER

DIMENSIONS IN INCHES

## GEZ & GEZ-2RS

Metal to Metal	Sealed	B	D	T	W	Ball Dia. Ref.	R <sub>1s</sub>	R <sub>2s</sub>	Misalign. Angle a°	Ult. Radial Static Load Lbs.	Approx. Brg. Wgt. Lbs.
GEZ12ES	-	0.500	0.875	0.375	0.437	0.709	0.012	0.024	6.0	9,217	0.05
GEZ15ES	-	0.625	1.063	0.469	0.547	0.906	0.012	0.024	6.0	14,613	0.08
GEZ19ES	GEZ19ES2RS	0.750	1.250	0.562	0.656	1.083	0.012	0.024	6.0	21,357	0.12
GEZ22ES	GEZ22ES2RS	0.875	1.438	0.656	0.765	1.260	0.012	0.024	6.0	28,551	0.19
GEZ25ES	GEZ25ES2RS	1.000	1.625	0.750	0.875	1.437	0.012	0.024	6.0	37,318	0.27
GEZ31ES	GEZ31ES2RS	1.250	2.000	0.937	1.093	1.791	0.024	0.024	6.0	58,450	0.51
GEZ34ES	GEZ34ES2RS	1.375	2.188	1.031	1.187	1.929	0.024	0.039	6.0	69,691	0.77
GEZ38ES	GEZ38ES2RS	1.500	2.438	1.125	1.312	2.154	0.024	0.039	6.0	84,303	0.93
GEZ44ES	GEZ44ES2RS	1.750	2.813	1.312	1.531	2.516	0.024	0.039	6.0	114,653	1.41
GEZ50ES	GEZ50ES2RS	2.000	3.188	1.500	1.750	2.874	0.024	0.039	6.0	150,622	2.05
GEZ57ES	GEZ57ES2RS	2.250	3.563	1.687	2.166	3.228	0.024	0.039	6.0	191,088	2.93
GEZ63ES	GEZ63ES2RS	2.500	3.938	1.875	2.187	3.622	0.024	0.039	6.0	238,298	4.08
GEZ69ES	GEZ69ES2RS	2.750	4.375	2.062	2.406	3.937	0.039	0.039	6.0	281,011	5.34
GEZ76ES	GEZ76ES2RS	3.000	4.750	2.250	2.625	4.311	0.039	0.039	6.0	337,213	6.83



Spherical Bearings