

Male-to-Male
Linkage Adjuster
Features

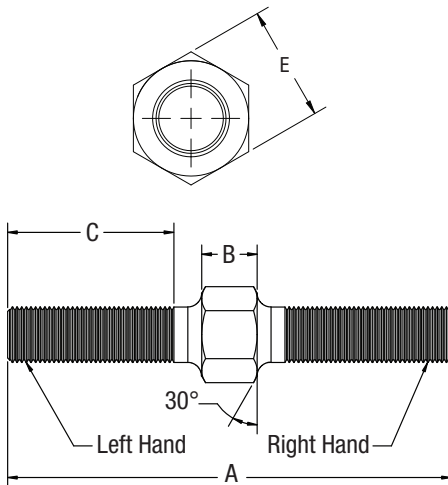
- BODY
- Alloy Steel
 - Heat Treated
 - Protective Coated

PART NUMBER

DIMENSIONS IN INCHES

Male-to-Male
Linkage Adjusters

Alloy Steel	Thread UNF-3A Left Hand	Thread UNF-3A Right Hand	A ± .020	B ± .020	C + .062 - .031	E + .000 - .015
ASM3-19	10-32	10-32	1.9400	0.1900	0.7500	0.3750
ASM4-26	1/4-28	1/4-28	2.5500	0.2500	1.0000	0.4375
ASM5-27	5/16-24	5/16-24	2.6725	0.3125	1.0000	0.5000
ASM6-33	3/8-24	3/8-24	3.2500	0.3750	1.2500	0.5625
ASM7-37	7/16-20	7/16-20	3.6875	0.4375	1.3750	0.6880
ASM8-40	1/2-20	1/2-20	4.0000	0.5000	1.5000	0.7500
ASM10-50	5/8-18	5/8-18	4.9850	0.6250	1.8750	0.9380
ASM12-55	3/4-16	3/4-16	5.5000	0.5000	2.2500	1.1250
ASM12-60	3/4-16	3/4-16	6.000	0.7500	2.2500	1.1250
ASM12-65	3/4-16	3/4-16	6.5000	1.2500	2.2500	1.1250
ASM12-75	3/4-16	3/4-16	7.5000	2.2500	2.2500	1.1250
ASM14-66	7/8-14	7/8-14	6.6250	0.8750	2.3750	1.3125
ASM16-80	1 1/4-12	1 1/4-12	8.0000	1.0000	2.8750	1.8750
ASM16-1-80	1-14**	1-14**	8.0000	1.0000	2.8750	1.5000
ASM16-2-80	1-12	1-12	8.0000	1.0000	2.8750	1.5000



Male-to-Female
Linkage Adjuster
Features

- STEEL ADJUSTERS
- Alloy Steel
 - Heat Treated
 - Zinc Plated & Yellow Dichromate

- ALUMINUM ADJUSTERS
- 7075-T6 Aluminum
 - Black Anodized

PART NUMBER

DIMENSIONS IN INCHES

Male-to-Female
Linkage Adjusters

Alloy Steel	Aluminum	M UNF-3A Left Hand	F UNF-2B Right Hand	A Ref.	B ± .020	C + .062 - .031	D + .062 - .031	E Ref.
AS6-6	AA6-6	3/8-24	3/8-24	2.875	1.250	1.250	0.812	9/16
AS7-7	AA7-7	7/16-20	7/16-20	3.125	1.375	1.375	0.937	11/16
AS8-8	AA8-8	1/2-20	1/2-20	3.375	1.500	1.500	1.062	3/4
AS10-10	AA10-10	5/8-18	5/8-18	3.813	1.813	1.625	1.375	15/16
AS12-12	AA12-12	3/4-16	3/4-16	4.125	2.000	1.750	1.562	1 1/8
ADJ12-12*	-	3/4-16	3/4-16	4.125	2.000	1.600	1.531	1

