

KM & KF Features

BALL

- 52100 Bearing Steel
- Heat Treated
- Hard Chrome Plated
- Precision Ground

RACE

- Alloy Steel
- Heat Treated

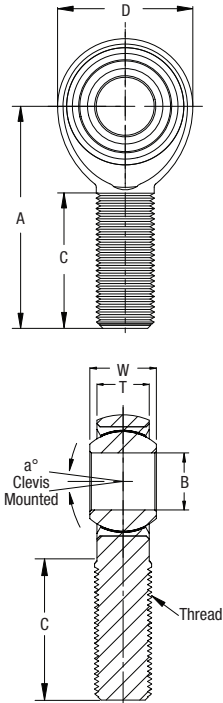
BODY

- Carbon Steel (Alloy Steel - Mfr.'s Option)
- Protective Coated for Corrosion Resistance

PART NUMBER

DIMENSIONS IN INCHES

KM Male

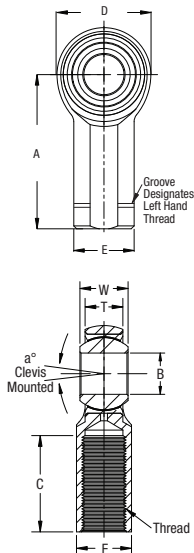


Right Hand	Left Hand	B + .0015 - .0005	W + .000 - .005	T ± .005	A ± .015	D ± .010	Ball Dia. Ref.	C + .062 - .031	Thread UNF-3A	Misalign. Angle a°	Ult. Radial Static Load Lbs.	Approx. Brg. Wgt. Lbs.
KMR3	KML3	0.1900	0.312	0.250	1.250	0.625	0.437	0.750	10-32	13	1,169	0.03
KMR3-4	KML3-4	0.1900	0.312	0.250	1.562	0.750	0.437	1.000	1/4-28	10	2,158	0.04
KMR4	KML4	0.2500	0.375	0.281	1.562	0.750	0.500	1.000	1/4-28	16	2,158	0.04
KMR4-5	KML4-5	0.2500	0.375	0.281	1.875	0.875	0.500	1.250	5/16-24	13	3,467	0.07
KMR5	KML5	0.3125	0.437	0.344	1.875	0.875	0.625	1.250	5/16-24	14	2,784	0.07
KMR5-6	KML5-6	0.3125	0.437	0.344	1.938	1.000	0.625	1.250	3/8-24	12	5,323	0.11
KMR6	KML6	0.3750	0.500	0.406	1.938	1.000	0.719	1.250	3/8-24	12	3,915	0.11
KMR6-7	KML6-7	0.3750	0.500	0.406	2.125	1.125	0.719	1.375	7/16-20	10	7,180	0.16
KMR7	KML7	0.4375	0.562	0.437	2.125	1.125	0.812	1.375	7/16-20	14	4,218	0.16
KMR7-8	KML7-8	0.4375	0.562	0.437	2.438	1.312	0.812	1.500	1/2-20	12	9,620	0.24
KMR8	KML8	0.5000	0.625	0.500	2.438	1.312	0.937	1.500	1/2-20	12	6,660	0.25
KMR8-10	KML8-10	0.5000	0.625	0.500	2.625	1.500	0.937	1.625	5/8-18	10	12,807	0.37
KMR10	KML10	0.6250	0.750	0.562	2.625	1.500	1.125	1.625	5/8-18	16	7,364	0.38
KMR10-12	KML10-12	0.6250	0.750	0.562	2.875	1.750	1.125	1.750	3/4-16	13	16,565	0.57
KMR12	KML12	0.7500	0.875	0.687	2.875	1.750	1.312	1.750	3/4-16	14	11,518	0.60
KMR12-14	KML12-14	0.7500	0.875	0.687	3.375	2.000	1.312	1.875	7/8-14	12	22,843	0.92
KMR14	KML14	0.8750	0.875	0.765	3.375	2.000	1.375	2.000	7/8-14	7	18,476	0.92
KMR16	KML16	1.0000	1.375	1.000	4.125	2.750	1.875	2.125	1 1/4-12	17	43,541	2.41
KMR16-1	KML16-1	1.0000	1.375	1.000	4.125	2.750	1.875	2.125	1-14*	17	43,541	2.13
KMR16-2	KML16-2	1.0000	1.375	1.000	4.125	2.750	1.875	2.125	1-12	17	43,541	2.13

PART NUMBER

DIMENSIONS IN INCHES

KF Female



Right Hand	Left Hand	B + .0015 - .0005	W + .000 - .005	T ± .005	A ± .015	D ± .010	E ± .010	F ± .010	Ball Dia. Ref.	C + .062 - .031	Thread UNF-2B	Misalign. Angle a°	Ult. Radial Static Load Lbs.	Approx. Brg. Wgt. Lbs.
KFR3	KFL3	0.1900	0.312	0.250	1.062	0.625	0.406	0.312	0.437	0.562	10-32	13	1,531	0.04
KFR4	KFL4	0.2500	0.375	0.281	1.312	0.750	0.469	0.375	0.500	0.750	1/4-28	16	2,539	0.06
KFR5	KFL5	0.3125	0.437	0.344	1.375	0.875	0.500	0.437	0.625	0.750	5/16-24	14	3,133	0.09
KFR6	KFL6	0.3750	0.500	0.406	1.625	1.000	0.687	0.562	0.719	0.937	3/8-24	12	3,915	0.15
KFR7	KFL7	0.4375	0.562	0.437	1.812	1.125	0.750	0.625	0.812	1.062	7/16-20	14	4,218	0.20
KFR8	KFL8	0.5000	0.625	0.500	2.125	1.312	0.875	0.750	0.937	1.187	1/2-20	12	6,660	0.33
KFR10	KFL10	0.6250	0.750	0.562	2.500	1.500	1.000	0.875	1.125	1.500	5/8-18	16	7,364	0.48
KFR12	KFL12	0.7500	0.875	0.687	2.875	1.750	1.125	1.000	1.312	1.750	3/4-16	14	11,518	0.72
KFR14	KFL14	0.8750	0.875	0.765	3.375	2.000	1.300	1.125	1.375	1.875	7/8-14	7	18,476	1.03
KFR16	KFL16	1.0000	1.375	1.000	4.125	2.750	1.625	1.500	1.875	2.125	1 1/4-12	17	40,889	2.28
KFR16-1	KFL16-1	1.0000	1.375	1.000	4.125	2.750	1.625	1.500	1.875	2.125	1-14*	17	43,541	2.58
KFR16-2	KFL16-2	1.0000	1.375	1.000	4.125	2.750	1.625	1.500	1.875	2.125	1-12	17	43,541	2.58

KM-T & KF-T Carbon Steel

Alloy Race - PTFE Lined - Right & Left Hand Threads - Male & Female

P R E C I S I O N

Inch
3-Piece
Rod Ends

QA1

KM-T & KF-T

Features

BALL

- 52100 Bearing Steel
- Heat Treated
- Hard Chrome Plated
- Precision Ground

RACE

- Alloy Steel
- PTFE Lined

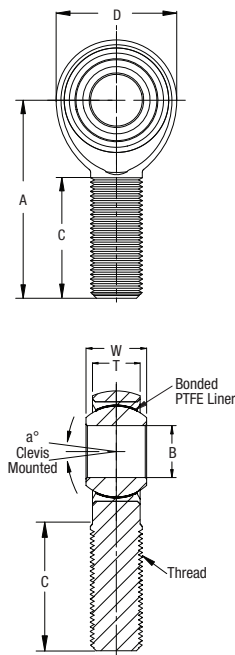
BODY

- Carbon Steel (Alloy Steel - Mfr.'s Option)
- Protective Coated for Corrosion Resistance

PART NUMBER

DIMENSIONS IN INCHES

KM-T Male



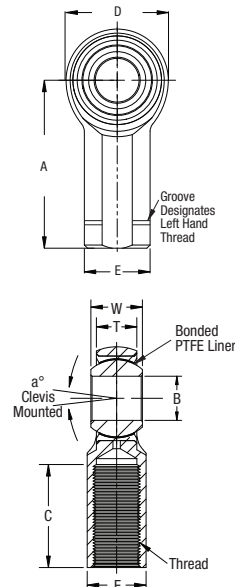
Right Hand	Left Hand	B + .0015 - .0005	W + .000 - .005	T ± .005	A ± .015	D ± .010	Ball Dia. Ref.	C + .062 - .031	Thread UNF-3A	Misalign. Angle a°	Ult. Static Load Lbs.	Radial Static Load Lbs.	Approx. Brg. Wgt. Lbs.
KMR3T	KML3T	0.1900	0.312	0.250	1.250	0.625	0.437	0.750	10-32	13	1,169	0.03	
KMR3-4T	-	0.1900	0.312	0.250	1.562	0.750	0.437	1.000	1/4-28	10	2,158	0.04	
KMR4T	KML4T	0.2500	0.375	0.281	1.562	0.750	0.500	1.000	1/4-28	16	2,158	0.04	
KMR4-5T	KML4-5T	0.2500	0.375	0.281	1.875	0.875	0.500	1.250	5/16-24	13	3,467	0.07	
KMR5T	KML5T	0.3125	0.437	0.344	1.875	0.875	0.625	1.250	5/16-24	14	2,784	0.07	
KMR5-6T	KML5-6T	0.3125	0.437	0.344	1.938	1.000	0.625	1.250	3/8-24	12	5,323	0.11	
KMR6T	KML6T	0.3750	0.500	0.406	1.938	1.000	0.719	1.250	3/8-24	12	3,915	0.11	
KMR6-7T	KML6-7T	0.3750	0.500	0.406	2.125	1.125	0.719	1.375	7/16-20	10	7,180	0.16	
KMR7T	KML7T	0.4375	0.562	0.437	2.125	1.125	0.812	1.375	7/16-20	14	4,218	0.16	
KMR7-8T	KML7-8T	0.4375	0.562	0.437	2.438	1.312	0.812	1.500	1/2-20	12	9,620	0.24	
KMR8T	KML8T	0.5000	0.625	0.500	2.438	1.312	0.937	1.500	1/2-20	12	6,660	0.25	
KMR8-10T	KML8-10T	0.5000	0.625	0.500	2.625	1.500	0.937	1.625	5/8-18	10	12,807	0.37	
KMR10T	KML10T	0.6250	0.750	0.562	2.625	1.500	1.125	1.625	5/8-18	16	7,364	0.38	
KMR10-12T	KML10-12T	0.6250	0.750	0.562	2.875	1.750	1.125	1.750	3/4-16	13	16,565	0.57	
KMR12T	KML12T	0.7500	0.875	0.687	2.875	1.750	1.312	1.750	3/4-16	14	11,518	0.60	
KMR12-14T	KML12-14T	0.7500	0.875	0.687	3.375	2.000	1.312	1.875	7/8-14	12	22,843	0.92	
KMR14T	KML14T	0.8750	0.875	0.765	3.375	2.000	1.375	2.000	7/8-14	7	18,476	0.92	
KMR16T	KML16T	1.0000	1.375	1.000	4.125	2.750	1.875	2.125	1 1/4-12	17	43,541	2.41	
KMR16T-1	KML16T-1	1.0000	1.375	1.000	4.125	2.750	1.875	2.125	1-14*	17	43,541	2.13	
KMR16T-2	-	1.0000	1.375	1.000	4.125	2.750	1.875	2.125	1-12	17	43,451	2.13	

SELF-LUBRICATING

PART NUMBER

DIMENSIONS IN INCHES

KF-T Female



Right Hand	Left Hand	B + .0015 - .0005	W + .000 - .005	T ± .005	A ± .015	D ± .010	E ± .010	F ± .010	Ball Dia. Ref.	C + .062 - .031	Thread UNF-2B	Misalign. Angle a°	Ult. Static Load Lbs.	Radial Static Load Lbs.	Approx. Brg. Wgt. Lbs.
KFR3T	KFL3T	0.1900	0.312	0.250	1.062	0.625	0.406	0.312	0.437	0.562	10-32	13	1,531	0.04	
KFR4T	KFL4T	0.2500	0.375	0.281	1.312	0.750	0.469	0.375	0.500	0.750	1/4-28	16	2,539	0.06	
KFR5T	KFL5T	0.3125	0.437	0.344	1.375	0.875	0.500	0.437	0.625	0.750	5/16-24	14	3,133	0.09	
KFR6T	KFL6T	0.3750	0.500	0.406	1.625	1.000	0.687	0.562	0.719	0.937	3/8-24	12	3,915	0.15	
KFR7T	KFL7T	0.4375	0.562	0.437	1.812	1.125	0.750	0.625	0.812	1.062	7/16-20	14	4,218	0.20	
KFR8T	KFL8T	0.5000	0.625	0.500	2.125	1.312	0.875	0.750	0.937	1.187	1/2-20	12	6,660	0.33	
KFR10T	KFL10T	0.6250	0.750	0.562	2.500	1.500	1.000	0.875	1.125	1.500	5/8-18	16	7,364	0.48	
KFR12T	KFL12T	0.7500	0.875	0.687	2.875	1.750	1.125	1.000	1.312	1.750	3/4-16	14	11,518	0.72	
KFR14T	KFL14T	0.8750	0.875	0.765	3.375	2.000	1.300	1.125	1.375	1.875	7/8-14	7	18,476	1.03	
KFR16T	KFL16T	1.0000	1.375	1.000	4.125	2.750	1.625	1.500	1.875	2.125	1 1/4-12	17	40,889	2.28	

SELF-LUBRICATING

Stud configurations available. See page 48 for details.

Load ratings apply only to rod ends without grease fittings.

*Threads 1-14 UNS.

ISO 9001

800.721.7761
www.QA1.net

19

Inch Rod Ends

**KM & KF Large Bore
Features**

BALL

- 52100 Bearing Steel
- Heat Treated
- MOS² Coated

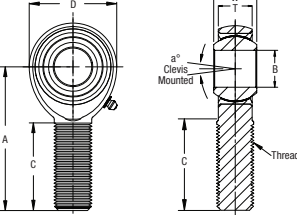
RACE

- 52100 Bearing Steel
- Heat Treated
- MOS² Coated
- Sealed

BODY

- Alloy Steel
- Protective Coated for Corrosion Resistance
- Grease Fitting Installed as Standard

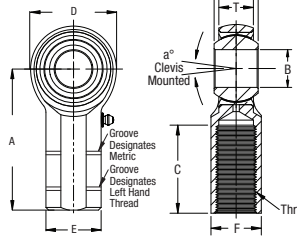
KM Male



PART NUMBER		DIMENSIONS IN INCHES										
Right Hand	Left Hand	B + .0000 - .0005	W + .000 - .005	T ± .020	A ± .040	D ± .030	Ball Dia. Ref.	C + .062 - .031	Thread UNF-3A	Misalign. Angle a°	Ult. Radial Static Load Lbs.	Approx. Brg. Wgt. Lbs.
KMR20Z	KML20Z	1.250	1.093	0.937	4.125	2.750	1.795	2.125	1 1/4-12	7.0	44,500	2.41
KMR24Z	KML24Z	1.500	1.312	1.125	5.375	3.500	2.155	3.000	1 1/2-12	6.5	64,770	4.75
KMR32Z	KML32Z	2.000	1.750	1.500	8.000	5.000	2.875	4.500	2-12*	6.0	153,528	14.25

PART NUMBER DIMENSIONS IN INCHES

KF Female



PART NUMBER		DIMENSIONS IN INCHES													
Right Hand	Left Hand	B + .0000 - .0005	W + .000 - .005	T ± .020	A ± .040	D ± .030	E ± .045	F ± .030	K ± .030	Ball Dia. Ref.	C + .062 - .031	Thread UNF-2B	Misalign. Angle a°	Ult. Radial Static Load Lbs.	Approx. Brg. Wgt. Lbs.
KFR20Z	KFL20Z	1.250	1.093	0.937	4.125	2.750	1.625	1.500	0.500	1.795	2.125	1 1/4-12	7.0	44,500	2.13
KFR24Z	KFL24Z	1.500	1.312	1.125	5.375	3.500	2.250	2.000	0.875	2.155	2.625	1 1/2-12	6.5	64,770	6.50
KFR32Z	KFL32Z	2.000	1.750	1.500	8.000	5.000	3.125	2.750	2.062	2.875	4.000	2-12*	6.0	153,528	15.00

**VM & VF
Features**

BALL

- 52100 Bearing Steel
- Heat Treated
- Hard Chrome Plated
- Precision Ground

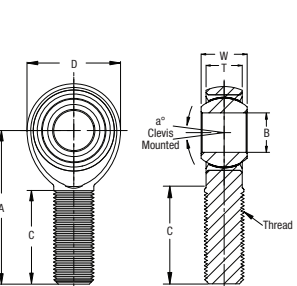
RACE

- Sintered Bronze
- Oil Impregnated

BODY

- Carbon Steel
- Protective Coated for Corrosion Resistance

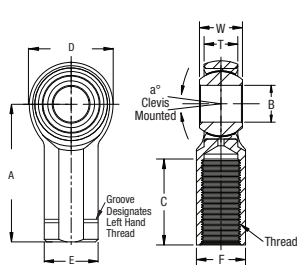
VM Male



PART NUMBER		DIMENSIONS IN INCHES										
Right Hand	Left Hand	B + .0025 - .0005	W ± .005	T ± .005	A ± .015	D ± .010	Ball Dia. Ref.	C + .062 - .031	Thread UNF-3A	Misalign. Angle a°	Ult. Radial Static Load Lbs.	Approx. Brg. Wgt. Lbs.
VMR3	VML3	0.1900	0.312	0.250	1.250	0.625	0.437	0.750	10-32	13	1,169	0.03
VMR4	VML4	0.2500	0.375	0.281	1.562	0.750	0.500	1.000	1/4-28	16	2,158	0.04
VMR5	VML5	0.3125	0.437	0.344	1.875	0.875	0.625	1.250	5/16-24	12	2,784	0.07
VMR6	VML6	0.3750	0.500	0.406	1.938	1.000	0.719	1.250	3/8-24	12	3,915	0.11
VMR7	VML7	0.4375	0.562	0.437	2.125	1.125	0.812	1.375	7/16-20	14	4,218	0.16
VMR8	VML8	0.5000	0.625	0.500	2.438	1.312	0.937	1.500	1/2-20	12	6,660	0.25
VMR10	VML10	0.6250	0.750	0.562	2.625	1.500	1.125	1.625	5/8-18	16	7,364	0.38
VMR12	VML12	0.7500	0.875	0.687	2.875	1.750	1.312	1.750	3/4-16	14	11,518	0.60

SELF-LUBRICATING

VF Female



PART NUMBER		DIMENSIONS IN INCHES												
Right Hand	Left Hand	B + .0025 - .0005	W ± .005	T ± .005	A ± .015	D ± .010	E ± .010	F ± .010	Ball Dia. Ref.	C + .062 - .031	Thread UNF-2B	Misalign. Angle a°	Ult. Radial Static Load Lbs.	Approx. Brg. Wgt. Lbs.
VFR3	VFL3	0.1900	0.312	0.250	1.062	0.625	0.406	0.312	0.562	0.562	10-32	13	1,531	0.04
VFR4	VFL4	0.2500	0.375	0.281	1.312	0.750	0.469	0.375	0.750	0.750	1/4-28	16	2,539	0.06
VFR5	VFL5	0.3125	0.437	0.344	1.375	0.875	0.500	0.437	0.750	0.750	5/16-24	12	3,133	0.09
VFR6	VFL6	0.3750	0.500	0.406	1.625	1.000	0.687	0.562	0.937	0.937	3/8-24	12	3,915	0.15
VFR7	VFL7	0.4375	0.562	0.437	1.812	1.125	0.750	0.625	1.062	1.062	7/16-20	14	4,218	0.20
VFR8	VFL8	0.5000	0.625	0.500	2.125	1.312	0.875	0.750	1.189	1.187	1/2-20	12	6,660	0.33
VFR10	VFL10	0.6250	0.750	0.562	2.500	1.500	1.000	0.875	1.125	1.500	5/8-18	16	7,364	0.48
VFR12	VFL12	0.7500	0.875	0.687	2.875	1.750	1.125	1.000	1.312	1.750	3/4-16	14	11,518	0.72

SELF-LUBRICATING