



# 1310 U-JOINTS

3.2" Dia. / JJC-AA0310

### STEP 1: VEHICLE DATA

Total Vehicle Weight: \_\_\_\_\_ Horsepower: \_\_\_\_\_

Torque: \_\_\_\_\_ Max RPM: \_\_\_\_\_

Send completed form to your local dealer or to [Sales@QA1.net](mailto:Sales@QA1.net).

For more information and measurements, visit [QA1.net/custom-driveshafts](http://QA1.net/custom-driveshafts)

### STEP 2: DRIVESHAFT OPTIONS

#### 1. Rear U-joints:

	Series	Joint Type	Figure	Cap Dia (D)	Width (E)	Cap Dia (F)	Width (G)
<input type="checkbox"/>	1310	Solid	1	1.063"	3.219"	1.063"	3.219"
<input type="checkbox"/>	1310-1330	Conversion	1	1.063"	3.219"	1.063"	3.622"
<input type="checkbox"/>	1310-1350	Conversion	1	1.063"	3.219"	1.188"	3.622"
<input type="checkbox"/>	1310-3R	Conversion	2	1.063"	3.219"	1.125"	2.556"

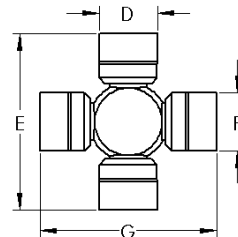


FIGURE 1

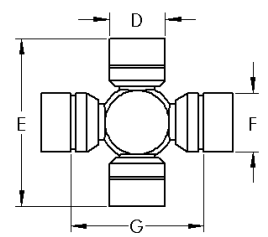


FIGURE 2

#### 2. Full spline slip yoke:

- GM 27 - 1.503" O.D., 5.5" Long, Billet
- GM 32 - 1.886" O.D., 5.5" Long, Billet
- Ford 28 - 1.499" O.D., 6.0" Long, Billet
- Ford 31 - 1.684" O.D., 7.0" Long

### STEP 3: DRIVESHAFT MEASUREMENTS

Take measurements with vehicle at ride height. Measure to within 1/16". Available in lengths up to 65".

Center of front U-joint to center of rear U-joint (A): \_\_\_\_\_

Take this u-joint center-to-center measurement with the slip yoke in its operating position. The slip yoke operating position is typically determined by pulling the slip yoke out of the transmission 1" after it is fully bottomed out.

OR

End of transmission tail housing to center of rear U-joint (B): \_\_\_\_\_

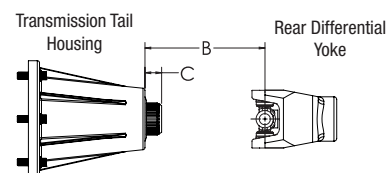
and

End of output shaft to end of transmission tail housing (C): \_\_\_\_\_

Driveshaft Assembly with Rear U-Joint



Detailed View  
Minus the Driveshaft





# REV™ SERIES CARBON FIBER DRIVESHAFT ORDER FORM

## PAYMENT

100% **non-refundable** payment required on all custom driveshaft orders before production begins.

## LEGAL DISCLAIMER NOTICE

QA1 warrants that this composite driveshaft will be free from defects in material and workmanship for one year from date of sale to the original purchaser. QA1 assumes no responsibility or liability for the selection, installation or any use of the products. The end user acknowledges that the product will be used for vehicles with not more than 2000 HP with max torque of 1500 lb\*ft for driveshafts using 1350 Series U-joints and not more than 750 HP with max torque of 500 lb\*ft for driveshafts using all other U-joints and assumes any and all risks related to such activities. The end user and any person who installs this product and related components are solely responsible for determination of the suitability of the product and components selected. The end user installs and uses the products and components at their own risk and agrees to fully indemnify QA1 against any claims, damages or losses resulting from the selection, installation or use of the products or related components.

Only experienced and qualified persons should install the products and components. Failure to properly install the product or related components may result in vehicle damage, personal injury or death.

**QA1 IS NOT RESPONSIBLE FOR IMPROPER OR INCORRECT INFORMATION PROVIDED BY CUSTOMER.**

**ALL SALES FINAL.**

**Warning:** Be sure to inspect all components regularly, especially following a crash. Do not use any components which may have been damaged.

**Warning:** If composite driveshaft is dropped or damaged, it should be taken out of service and replaced.

## QUESTIONS?

For any questions, please contact QA1 at 800.721.7761 or 952.985.5675 to speak to a support specialist. Our office hours are Monday - Friday, 8 am - 5 pm CST.

## SUBMITTING THE ORDER FORM

Please submit this completed order form to an authorized QA1 dealer or directly to QA1 via email at sales@qa1.net or via fax at 952.985.5679.

**COMPLETED  
BY BUYER**

By signing below, I agree to the above disclaimer information and confirm that all information I have provided is accurate.

Signature: \_\_\_\_\_ Date: \_\_\_\_\_

Print Name: \_\_\_\_\_

Address: \_\_\_\_\_

City: \_\_\_\_\_ State: \_\_\_\_\_ Zip: \_\_\_\_\_

Email: \_\_\_\_\_ Phone: \_\_\_\_\_

**COMPLETED  
BY DEALER**

QA1 Dealer Name: \_\_\_\_\_

Address: \_\_\_\_\_

City: \_\_\_\_\_ State: \_\_\_\_\_ Zip: \_\_\_\_\_

Email: \_\_\_\_\_ Phone: \_\_\_\_\_

Submitted to QA1 by: \_\_\_\_\_ Date: \_\_\_\_\_