

# NM & NF Carbon Steel

Nylon Self-Lubricating Race - Right & Left Hand Threads - Male & Female

**C O M M E R C I A L**

**Inch  
Injection Molded  
Rod Ends**

**QA1**

## NM & NF Features

### BALL

- 52100 Bearing Steel
- Heat Treated
- Hard Chrome Plated
- Precision Ground

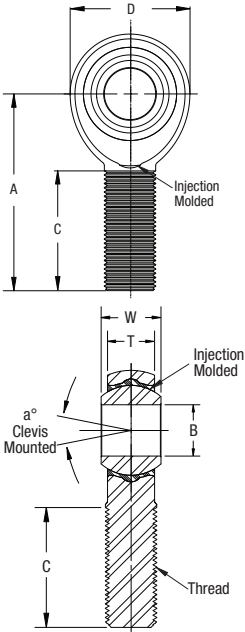
### RACE

- Reinforced Nylon 12 with PTFE

### BODY

- Carbon Steel
- Protective Coated for Corrosion Resistance

## NM Male

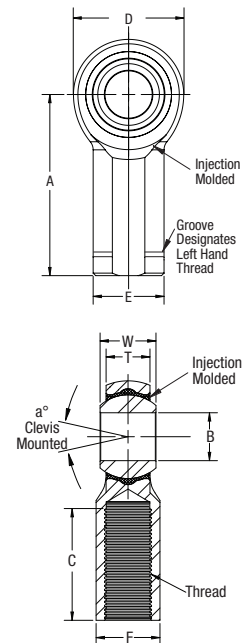


PART NUMBER		DIMENSIONS IN INCHES										
Right Hand	Left Hand	B + .0025 - .0005	W ± .005	T ± .005	A ± .015	D ± .010	Ball Dia. Ref.	C + .062 - .031	Thread UNF-3A	Misalign. Angle a°	Ult. Radial Static Load Lbs.	Approx. Brg. Wgt. Lbs.
NMR3	NML3	0.1900	0.312	0.250	1.250	0.625	0.437	0.750	10-32	13	1,210	0.02
NMR4	NML4	0.2500	0.375	0.281	1.562	0.750	0.500	1.000	1/4-28	16	2,470	0.04
NMR5	NML5	0.3125	0.437	0.344	1.875	0.875	0.625	1.250	5/16-24	14	2,740	0.07
NMR6	NML6	0.3750	0.500	0.406	1.938	1.000	0.719	1.250	3/8-24	12	4,210	0.11
NMR7	NML7	0.4375	0.562	0.437	2.125	1.125	0.812	1.375	7/16-20	14	5,350	0.15
NMR8	NML8	0.5000	0.625	0.500	2.438	1.312	0.937	1.500	1/2-20	12	6,430	0.23
NMR10	NML10	0.6250	0.750	0.562	2.625	1.500	1.125	1.625	5/8-18	16	8,300	0.36
NMR12	NML12	0.7500	0.875	0.687	2.875	1.750	1.312	1.750	3/4-16	14	10,900	0.57

## SELF-LUBRICATING

This series features a molded race compound designed to provide low friction, low moisture absorbing properties and high wear resistance. QA1's design is unique in the industry since no holes need to be drilled in the rod end body, thereby allowing the rod end to maintain its full strength and integrity.

## NF Female



PART NUMBER		DIMENSIONS IN INCHES												
Right Hand	Left Hand	B + .0025 - .0005	W ± .005	T ± .005	A ± .015	D ± .010	E ± .010	F ± .010	Ball Dia. Ref.	C + .062 - .031	Thread UNF-2B	Misalign. Angle a°	Ult. Radial Static Load Lbs.	Approx. Brg. Wgt. Lbs.
NFR3	NFL3	0.1900	0.312	0.250	1.062	0.625	0.406	0.312	0.437	0.562	10-32	13	1,210	0.04
NFR4	NFL4	0.2500	0.375	0.281	1.312	0.750	0.469	0.375	0.500	0.750	1/4-28	16	2,470	0.06
NFR5	NFL5	0.3125	0.437	0.344	1.375	0.875	0.500	0.437	0.625	0.750	5/16-24	14	2,740	0.08
NFR6	NFL6	0.3750	0.500	0.406	1.625	1.000	0.687	0.562	0.719	0.937	3/8-24	12	4,100	0.14
NFR7	NFL7	0.4375	0.562	0.437	1.812	1.125	0.750	0.625	0.812	1.062	7/16-20	14	5,350	0.19
NFR8	NFL8	0.5000	0.625	0.500	2.125	1.312	0.875	0.750	0.937	1.187	1/2-20	12	6,430	0.31
NFR10	NFL10	0.6250	0.750	0.562	2.500	1.500	1.000	0.875	1.125	1.500	5/8-18	16	8,300	0.45
NFR12	NFL12	0.7500	0.875	0.687	2.875	1.750	1.125	1.000	1.312	1.750	3/4-16	14	10,900	0.67

## SELF-LUBRICATING

Inch Rod Ends