

Spacers

Related
Products

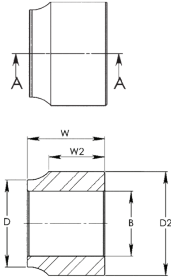


Spacer Features

- Stainless Steel

DIMENSIONS IN INCHES

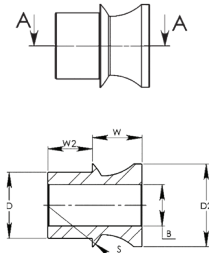
Standard Spacers



Part Number	D + .000 - .010	D2 Ref.	B + .003 - .000	W ± .100	W2 Ref.	Mating Rod End Bore
SG84	0.698	0.875	0.500	0.250	0.034	0.500
SG85	0.698	0.875	0.500	0.313	0.097	0.500
SG88	0.698	0.875	0.500	0.500	0.284	0.500
SG812	0.698	0.875	0.500	0.750	0.534	0.500
SG104	0.839	1.000	0.625	0.250	0.041	0.625
SG105	0.839	1.000	0.625	0.313	0.104	0.625
SG108	0.839	1.000	0.625	0.500	0.291	0.625
SG1012	0.839	1.000	0.625	0.750	0.541	0.625
SG124	0.978	1.125	0.750	0.250	0.048	0.750
SG125	0.978	1.125	0.750	0.313	0.111	0.750
SG128	0.978	1.125	0.750	0.500	0.298	0.750
SG1212	0.978	1.125	0.750	0.750	0.548	0.750

DIMENSIONS IN INCHES

High Misalignment Spacers



Part Number	D + .000 - .001	D2 ± .005	B + .003 - .000	W ± .005	W2 ± .005	S Ref.	Misalign. Angle a°	Total Installed Width Ref.	Mating Rod End Bore
SG10-84	0.624	0.825	0.500	0.250	0.360	1.125	54	1.250	0.625
SG10-813	0.624	0.875	0.500	0.837	0.363	1.125	44	2.425	0.750
SG12-84	0.749	0.850	0.500	0.250	0.423	1.312	56	1.375	0.750
SG12-88	0.749	0.850	0.500	0.500	0.423	1.312	58	1.875	0.750
SG12-108	0.749	0.950	0.625	0.500	0.423	1.312	52	1.875	0.750
SG12-812	0.749	0.950	0.500	0.775	0.423	1.312	54	2.425	0.750
SG12-816-W	0.749	0.875	0.500	1.000	0.423	1.312	54	2.875	0.750
SG14-813	0.874	1.000	0.500	0.813	0.423	1.375	52	2.500	0.875
SG14-1010	0.874	1.062	0.625	0.625	0.423	1.375	44	2.125	0.875
SG14-1012	0.874	1.000	0.625	0.775	0.423	1.375	46	2.425	0.875
SG16-910	0.999	1.250	0.563	0.625	0.673	1.875	66	2.625	1.375
SG16-1010	0.999	1.250	0.625	0.625	0.673	1.875	64	2.625	1.375
SG16-1012	0.999	1.250	0.625	0.750	0.673	1.875	60	2.875	1.000
SG16-1013	0.999	1.250	0.625	0.813	0.673	1.875	60	3.000	1.375
SG16-1210	0.999	1.250	0.750	0.625	0.673	1.875	60	2.625	1.375
SG16-1212	0.999	1.250	0.750	0.750	0.673	1.875	57	2.875	1.000
SN6-45	0.375	0.500	0.250	0.297	0.195	0.656	54	1.000	0.406
SN6-46	0.375	0.500	0.250	0.422	0.195	0.656	56	1.250	0.406
SN8-66	0.499	0.625	0.375	0.375	0.242	0.781	56	1.250	0.500
SN8-68	0.499	0.625	0.375	0.500	0.242	0.781	57	1.500	0.500
SN10-67	0.624	0.830	0.375	0.438	0.302	0.968	48	1.500	0.625
SN10-87	0.624	0.830	0.500	0.438	0.301	0.968	48	1.500	0.625
SN10-815-W	0.624	0.750	0.500	0.938	0.301	0.968	48	2.500	0.625
SN12-68	0.749	0.875	0.375	0.500	0.360	1.187	62	1.750	0.750
SN12-88	0.749	0.950	0.500	0.500	0.360	1.187	56	1.750	0.750
SN12-97	0.749	0.950	0.563	0.438	0.360	1.187	54	1.625	0.750
SN12-98	0.749	0.950	0.563	0.500	0.360	1.187	54	1.750	0.750
SN12-107	0.749	0.950	0.625	0.438	0.360	1.187	50	1.625	0.750
SN12-108	0.749	0.950	0.625	0.500	0.360	1.187	50	1.750	0.750
SN14-89	0.874	0.950	0.500	0.563	0.423	1.312	52	2.000	0.875
SN14-99	0.875	1.000	0.563	0.563	0.423	1.312	48	2.000	0.875
SN14-109	0.875	1.000	0.625	0.563	0.423	1.312	45	2.000	0.875
SN14-129	0.875	1.000	0.750	0.563	0.423	1.312	38	2.000	0.875
SN16-913	0.999	1.250	0.563	0.813	0.485	1.500	52	2.625	1.000
SN16-1013	0.999	1.250	0.625	0.813	0.485	1.500	50	2.625	1.000
SN16-1016-W	0.999	1.250	0.625	1.000	0.485	1.500	50	3.000	1.000
SN16-1213	0.999	1.250	0.750	0.813	0.485	1.500	44	2.625	1.000
SN16-1216	0.999	1.250	0.750	1.000	0.485	1.500	44	3.000	1.000
SN16-1218-H	0.999	1.250	0.750	1.125	0.485	1.687	60	3.250	1.000
SN16-1224-W	0.999	1.250	0.750	1.500	0.485	1.500	44	4.000	1.000
SN20-1014-H	1.249	1.313	0.625	0.908	0.579	2.000	68	3.000	1.188
SN20-1211-H	1.249	1.313	0.750	0.719	0.579	2.000	64	2.625	1.188
SN20-1214-H	1.249	1.375	0.750	0.907	0.579	2.000	64	3.000	1.188
SN24-1017-H	1.499	1.625	0.625	1.063	0.673	2.312	68	3.500	1.375
SN24-1217-H	1.499	1.625	0.750	1.063	0.673	2.312	65	3.500	1.375
SN24-1221-H	1.499	1.625	0.750	1.313	0.673	2.312	65	4.000	1.375

High Misalignment Standard Ball Width Spacers (SG Series) will fit WPB-T (size 14 & 16 only), AIB, SIB and MIB spherical bearings and all inch rod ends.

High Misalignment Narrow Ball Width Spacers (SN Series), will fit SLB, COM, COM-SS and NPB spherical bearings. SN-H Series will fit H-COM spherical bearings only.

Related Products