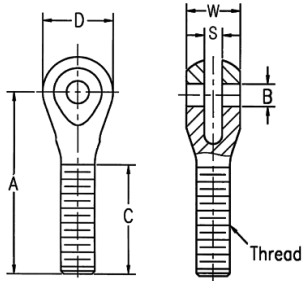


**Clevis
Features**

- STANDARD CLEVIS**
- Carbon Steel
 - Protective Coated for Corrosion Resistance

Clevises



PART NUMBER

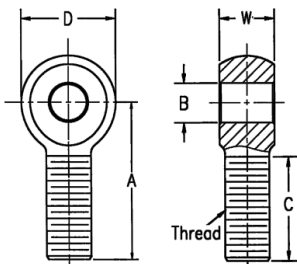
DIMENSIONS IN INCHES

Right Hand	Left Hand	Bore x Thread Ref.	B + .005 - .000	D ± .010	W ± .005	A ± .015	C + .062 - .031	S ± .005	Thread Ref.
CR4-5	CL4-5	1/4 X 5/16	0.2500	0.875	0.625	2.250	1.250	0.1880	5/16-24
CR5-5	CL5-5	5/16 X 5/16	0.3125	0.875	0.625	2.250	1.250	0.1880	5/16-24
CR5-6	CL5-6	5/16 X 3/8	0.3125	0.875	0.625	2.250	1.250	0.1880	3/8-24
CR5-8	CL5-8	5/16 X 1/2	0.3125	1.000	0.750	2.500	1.500	0.2500	1/2-20
CR6-8	CL6-8	3/8 X 1/2	0.3750	1.000	0.750	2.500	1.500	0.2500	1/2-20
CR6-8-1CP*	CL6-8-1CP*	3/8 X 1/2	0.3750	1.000	0.750	2.750	1.500	0.3125	1/2-20
CR6-8-2CP*	CL6-8-2CP*	3/8 X 1/2	0.3750	1.000	0.750	2.750	1.500	0.3750	1/2-20
CR6-10	CL6-10	3/8 X 5/8	0.3750	1.125	0.825	3.375	2.000	0.3750	5/8-18
CR6-10CP*	CL6-10CP*	3/8 X 5/8	0.3750	1.125	0.825	3.375	2.000	0.3750	5/8-18
CR6-12	CL6-12	3/8 X 3/4	0.3750	1.125	0.825	3.375	2.000	0.3750	3/4-16
CR7-8	CL7-8	7/16 X 1/2	0.4375	1.125	0.825	3.375	2.000	0.3750	1/2-20
CR7-10	CL7-10	7/16 X 5/8	0.4375	1.125	0.825	3.375	2.000	0.3750	5/8-18
CR8-10	CL8-10	1/2 X 5/8	0.5000	1.125	0.825	3.375	2.000	0.3750	5/8-18
CR8-12	CL8-12	1/2 X 3/4	0.5000	1.125	0.825	3.375	2.000	0.2500	3/4-16
CR8-12AL**	CL8-12AL**	1/2 X 3/4	0.5000	1.125	0.825	3.375	2.000	0.2500	3/4-16
CR8-12-1	CL8-12-1	1/2 X 3/4	0.5000	1.125	0.825	3.375	2.000	0.3750	3/4-16

**Rod Eye
Features**

- STANDARD ROD EYE**
- Carbon Steel
 - Protective Coated for Corrosion Resistance

Rod Eyes



PART NUMBER

DIMENSIONS IN INCHES

Right Hand	Left Hand	Bore x Thread + .005 - .000	B ± .010	D ± .010	W ± .005	A ± .015	C + .062 - .031	Thread Ref.
RER8	-	1/2 X 1/2	0.500	1.312	0.625	2.437	1.500	1/2-20
RER8-12	-	1/2 X 3/4	0.500	1.500	0.875	2.875	1.750	3/4-16
RER10	-	5/8 X 5/8	0.625	1.500	0.750	2.625	1.625	5/8-18
RER10-12*	-	5/8 X 3/4	0.625	1.500	0.875	2.500	1.650	3/4-16
RER10-12-1	REL10-12-1	5/8 X 3/4	0.625	1.750	0.875	2.875	1.750	3/4-16
RER12	-	3/4 X 3/4	0.750	1.750	0.875	2.875	1.750	3/4-16