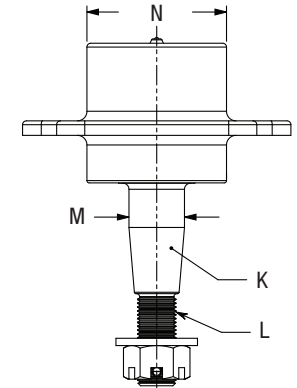
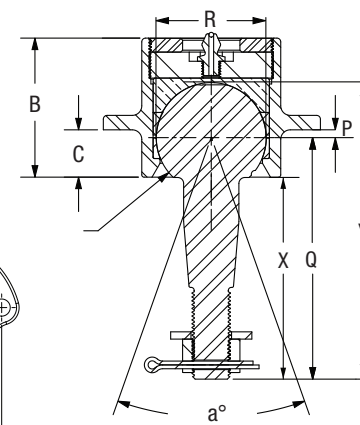
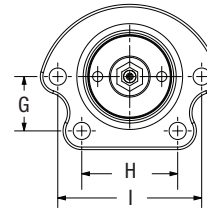


BOLT-IN STYLE

Part Number	Some Popular Applications	Location	Interchange		
			Moog®	Afco®	Howe®
1210-101	Fits Upper Taper of Pinto Spindles, 63-70 C10	Upper GM	K6024	20031LF	22300
1210-200B					
1210-201B					
1210-238B					
1210-103	73-87 Chevy Pickup, GMC Trucks, Modified, Street Stocks	Upper GM	K6136	20032-1LF	22301
1210-202B					
1210-203B					
1210-104					
1210-204B	71-96 Impala, 70-81 Camaro/Firebird, 73-83 Chevelle/Malibu, 73-88 Monte Carlo, 73-81 Lemans, 75-79 Nova/Chevy II, S-10 Trucks	Upper GM	K5208	20032LF	22302
1210-205B					
1210-285B					
1210-113					
1210-298B	67-69 Camaro/Firebird, 64-72 Chevelle/Malibu, 70-72 Monte Carlo, 68-74 Nova/Chevy II, 64-72 GTO	Upper GM	K5108	-	22303
1210-299B					
1210-299B					



Part Number	Housing Only Part Number	Stud Only Part Number	Length Difference	Stud Length (X)	Stud Length (Y)	Misalign. Angle (a°)	Under Shoulder Length (C)	Housing Depth (B)	Bolt Pattern Y Dim (G)	Bolt Pattern X1 Dim (H)	Bolt Pattern X2 Dim (I)	Stud Taper (K)	Stud Thread (L)	Taper Major Dia. (M)	Housing OD (N)	Ball Center from Mounting Flange (P)	Ball Center to End of Stud (Q)	Ball Diameter (R)
1210-101	1210-501	9029-220	Standard	2.330	3.542	65	0.619	1.819	1.062	1.875	2.813	1.5:12	1/2-20	0.724	1.818	0.098	2.851	1.438
1210-200B	1210-501	9029-200	+0.1	2.430	3.642	65	0.619	1.819	1.062	1.875	2.813	1.5:12	1/2-20	0.724	1.818	0.098	2.951	1.438
1210-201B	1210-501	9029-201	+0.5	2.830	4.042	65	0.619	1.819	1.062	1.875	2.813	1.5:12	1/2-20	0.724	1.818	0.098	3.351	1.438
1210-238B	1210-501	9029-128	+1.0	3.330	4.542	65	0.619	1.819	1.062	1.875	2.813	1.5:12	1/2-20	0.724	1.818	0.098	3.851	1.438
1210-103	1210-503	9029-221	Standard	2.641	3.850	65	0.619	1.819	1.062	1.875	2.813	2:12	1/2-20	0.723	1.818	0.100	3.16	1.438
1210-202B	1210-503	9029-202	+0.1	2.741	3.950	65	0.619	1.819	1.062	1.875	2.813	2:12	1/2-20	0.723	1.818	0.100	3.26	1.438
1210-203B	1210-503	9029-203	+0.5	3.141	4.350	65	0.619	1.819	1.062	1.875	2.813	2:12	1/2-20	0.723	1.818	0.100	3.66	1.438
1210-104	1210-504	9029-222	Standard	2.380	3.593	73	1.110	1.820	0.911	1.750	2.500	2:12	1/2-20	0.635	1.816	0.588	2.902	1.438
1210-204B	1210-504	9029-204	+0.1	2.480	3.693	73	1.110	1.820	0.911	1.750	2.500	2:12	1/2-20	0.635	1.816	0.588	3.002	1.438
1210-205B	1210-504	9029-205	+0.5	2.880	4.093	73	1.110	1.820	0.911	1.750	2.500	2:12	1/2-20	0.635	1.816	0.588	3.402	1.438
1210-285B	1210-504	9029-285	+1.0	3.380	4.593	73	1.110	1.820	0.911	1.750	2.500	2:12	1/2-20	0.635	1.816	0.588	3.902	1.438
1210-113	1210-513	9029-119	Standard	2.270	3.486	73	1.110	1.820	0.807	1.770	2.402	1.5:12	1/2-20	0.635	1.816	0.585	2.795	1.438
1210-298B	1210-513	9029-298	+0.5	2.770	3.986	73	1.110	1.820	0.807	1.770	2.402	1.5:12	1/2-20	0.635	1.816	0.585	3.295	1.438
1210-299B	1210-513	9029-299	+1.0	3.270	4.486	73	1.110	1.820	0.807	1.770	2.402	1.5:12	1/2-20	0.635	1.816	0.585	3.795	1.438

DIMENSIONS IN INCHES